

# Data sheet: Feeder cells (SL10)

Cat#: RCHEFC001, Lot: A010J13

For Research Use Only

MFG date 19, Jan, 2015

\*Guaranteed when stored at -80 deg.C. (Date by use)

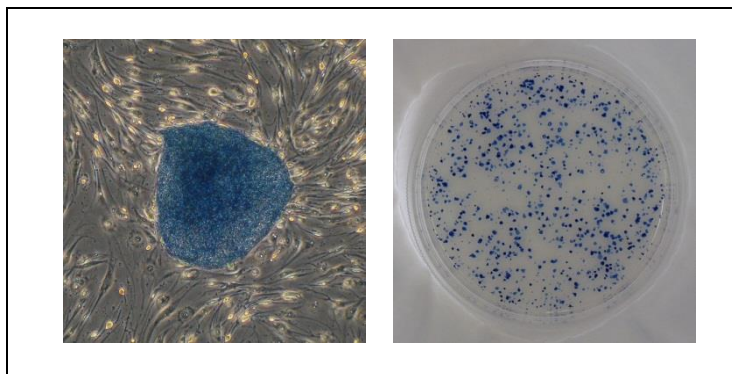
## ► Culture test performed using human iPS cells

### Methods

Human iPS cells (201B7; Takahashi, K. et al., *Cell*, 131, 861-72, 2007) were cultured in the Primate ES cell medium with SL10 feeder cells for more than 9 days (3 passages). Subsequently, the cell morphology was observed and compared with those of the control. Alkaline phosphatase activity was ascertained using the ALP substrate kit III (vector).

### Results

Alkaline phosphatase activity: Qualified



## ReproCELL Inc.

<https://www.reprocell.com>

E-mail:

➤ Japanese(日本語): [info\\_jp@reprocell.com](mailto:info_jp@reprocell.com)

➤ English(英語): [info\\_en@reprocell.com](mailto:info_en@reprocell.com)