

Data sheet:

StemRNA™ Human iPSC 802-3G



Cat No. RCRP004N

Lot No. J1901-08: 1.0×10^6 cells

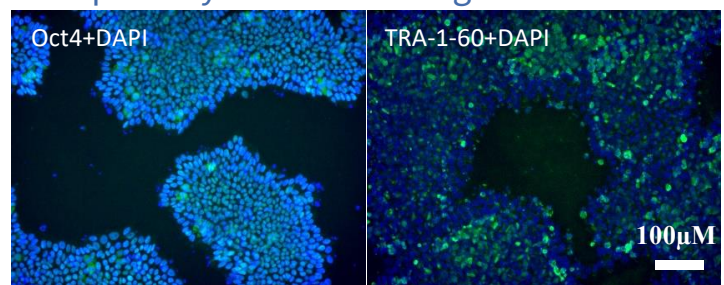
Properties and biological tests

Description	Human RNA-iPS cell line established from endothelial progenitor cells (derived from peripheral blood)	
Strain	RPChiPS8023G1	
Species	Human	
Race	Hispanic	
Gender	Female	
Age	30 years old	
Reprogramming methods	StemRNA™ 3 rd Gen Reprogramming Kit (Cat. No. 00-0076)	
Culture medium	NutriStem® hPSC XF medium (Cat. No. 01-0005)	
Culture matrix	iMatrix-511 (Cat. No. NP892-011)	
Freezing medium	NutriFreez™ D10 Cryopreservation Medium (Cat. No. 01-0020-50)	
Passage number	14	
Viability	>90%	
Pluripotency (ICC for Oct4, Nanog, TRA-1-60, SSEA-4)	Pass	
Microbiology	Bacteria	Negative
	Mycoplasma and <i>Treponema</i>	Negative
	Virus (HIV1&2, HBV, HCV, HTLV1&2)	Negative
Karyotype	46, XX	
Storage conditions	Liquid nitrogen	

Recommended seeding densities

Cell Culture Media Options		6-well plate	60 mm dish
NutriStem	Thawing	200,000	400,000
	Passage	100,000	200,000
StemFit	Thawing	65,000	145,000
	Passage	13,000	29,000

Pluripotency marker staining



REPROCELL USA Inc

9000 Virginia Manor Road
Suite 207
Beltsville, MD 20705
USA

Tel: +1 301 470 3362
Email: info-us@reprocell.com

REPROCELL Europe Ltd

Thomson Pavilion, Todd Campus
West of Scotland Science Park Acre
Road
Glasgow G20 0XA
UK

Tel: +44 (0)141 465 3460
Email: info-emea@reprocell.com

REPROCELL India Ltd

3-1-135/1A, CNR Complex
Mallapur
Hyderabad 500 076
Telangana
India

Tel: +44 (0)141 465 3460
Email: info-emea@reprocell.com

REPROCELL Inc (Japan)

MetLife Shin-yokohama 381, Bldg. 9F
3-8-11, Shin-yokohama
Kohoku-ku, Yokohama
Kanagawa 222-0033
Japan

Tel: +81 45 475 3887
Email: info-asia@reprocell.com