

# Data sheet:

## StemRNA™ Human iPSC SK006.4



Cat No. RCRP012N

Lot No. J1904-16:  $1.0 \times 10^6$  cells

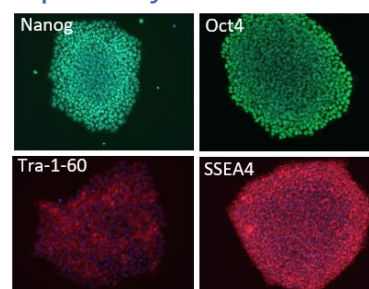
### Properties and biological tests

<b>Description</b>	Human RNA-iPS cell line established from fibroblasts derived from a skin punch.	
<b>Strain</b>	RPChIPSSK006.4	
<b>Species</b>	Human	
<b>Race</b>	Filipino	
<b>Gender</b>	Male	
<b>Age</b>	30 years old	
<b>Reprogramming methods</b>	StemRNA™ 3 <sup>rd</sup> Gen Reprogramming Kit (Cat. No. 00-0076)	
<b>Culture medium</b>	NutriStem® hPSC XF medium (Cat. No. 01-0005)	
<b>Culture matrix</b>	iMatrix-511 (Cat. No. NP892-011)	
<b>Freezing medium</b>	NutriFreez™ D10 Cryopreservation Medium (Cat. No. 01-0020-50)	
<b>Passage number</b>	5	
<b>Viability</b>	>90%	
<b>Pluripotency</b> (ICC for Oct4, Nanog, TRA-1-60, SSEA-4)	Pass	
<b>Microbiology</b>	<b>Bacteria and fungi</b>	Negative
	<b>Mycoplasma and <i>Treponema</i></b>	Negative
	<b>Virus</b> (HIV1&2, HBV, HCV, HTLV1&2, CMV)	Negative
<b>Karyotype</b>	46, XY	
<b>Storage conditions</b>	Liquid nitrogen	

### Recommended seeding densities

Cell Culture Media Options		6-well plate	60 mm dish
NutriStem	Thawing	200,000	400,000
	Passage	100,000	200,000

### Pluripotency marker staining



#### REPROCELL USA Inc

9000 Virginia Manor Road  
Suite 207  
Beltsville, MD 20705  
USA

Tel: +1 301 470 3362

Email: [info-us@reprocell.com](mailto:info-us@reprocell.com)

#### REPROCELL Europe Ltd

Thomson Pavilion, Todd Campus  
West of Scotland Science Park Acre  
Road  
Glasgow G20 0XA  
UK

Tel: +44 (0)141 465 3460

Email: [info-emea@reprocell.com](mailto:info-emea@reprocell.com)

#### REPROCELL India Ltd

3-1-135/1A, CNR Complex  
Mallapur  
Hyderabad 500 076  
Telangana  
India

Tel: +44 (0)141 465 3460

Email: [info-emea@reprocell.com](mailto:info-emea@reprocell.com)

#### REPROCELL Inc (Japan)

MetLife Shin-yokohama 381, Bldg. 9F  
3-8-11, Shin-yokohama  
Kohoku-ku, Yokohama  
Kanagawa 222-0033  
Japan

Tel: +81 45 475 3887

Email: [info-asia@reprocell.com](mailto:info-asia@reprocell.com)